

# Akarana Timbers

## Marlin Classic



## Thank you to our Sponsors

SHIMANO



UNITED INDUSTRIES LIMITED



OLIVER TUCK CONSTRUCTION



COMPLETE concrete LIMITED



MONSTER FISHING.CO.NZ



WARREN HAY MARINE



NO. 7B KITEPAI STREET



MANAIA MARINE  
Vessel Services and Management



# Akarana Marlin Classic 2026



## Welcome to the Akarana Marlin Classic 2026

The purpose of this tournament is to make sure you have good time and an equal chance to win some great prizes and promote Marsden Cove Fishing club and our amazing sponsors.

For this reason, we have a set of rules as outlined below. Please read them carefully and make sure you understand them. If there are any doubts or matters that need clarification please note and discuss prior to start fishing.

Any matters not specifically covered by these rules will be covered by the NZSFC & IGFA rules, or the discretion of the tournament committee.

**No Liability is accepted by Marsden Cove Fishing Club nor any of the event organisers for damage to any boat, vehicle, property or personal injury of any nature. It is the skippers and anglers' responsibility to take all steps to ensure no harm come to any person.**

### **Skipper Responsibility**

It is your responsibility to ensure all persons on board get home safely and ensure your vessel carries the right equipment lifejackets/VHF/EPIRB/flare pack/cell phone and the vessel is maintained and carrying plenty of fuel for your journey (don't be that guy who has to ask for spare fuel or be towed home)

**Eligibility** – Minimum of 2 people have to be on board.

### **IMPORTANT TIMES**

#### **Wednesday 28/01/26**

6.30pm Briefing at Marsden Cove Fishing Club. Attendance by at least 1 member of your team is compulsory so you get your starter pack with rules and daily ribbons prior to start fishing. Failure to have daily ribbons and name cards in your photos will end in that entry being disqualified.

#### **Thursday 29/01/26**

##### **Start fishing**

**5am - Any vessel found fishing prior to start fishing will be disqualified from the tournament.**

Weigh station open from 4 – 6.30pm

Daily prize giving 7pm

### **Friday 30/01/26**

Weigh station open from 4 – 6.30pm

Daily prize giving 7pm

### **Saturday 31/01/26**

**Stop fishing 3pm no fishing after stop fishing** (unless you are still playing a fish that was called in before 3pm). If you have called in the hook up prior to stop fishing, you have to be at the weigh station no later than 5pm.

Weigh Station opens at 2pm. All fish, catch sheets and completed tag cards accompanied by photo evidence are to be presented to the weigh master no later than 5pm.

### **Prizegiving**

Prizegiving will be held at Marsden Cove fishing club @ 7pm. Please bring your tickets.

### **Stay Aways**

Boats staying away from Marsden cove base is allowed however your fish are to be weighed at Marsden Cove no later than 5pm Saturday.

### **Fishing Competition**

#### **Fishing areaboundaries:**

**NORTH - ROCKY POINT-----35.6.930S.-174.5.469E OUT TO 35.6.930S 175.33.269 E INCLUDES NINE PIN TRENCH**

**SOUTH – Bream Tail ....36.1.767S 174.34.772E out to 36.1.767S 175.33.269E**

A copy of the grip map is provided.

### **Hook Ups**

Hook ups are to be called in on channel 18. Please give us the boat name, angler and sponsor grid you are in. If you are out of radio range, please try to relay your message via others on channel 7 or try to call via cell phone to Dave 0274 588 043 or Aarron 0272982972. When the fish hooks up, please take a picture of your GPS position to confirm the location. These photos will be checked to ensure you are fishing inside the competition boundaries.

### **Tagged Fish**

When a fish is tagged it must have the daily ribbon in the photo accompanied by a video or photo of the fish being released (swimming away). The tag card must be completed and handed to the weighmaster with a completed catch sheet and anglers ticket accompanied by the photo and video to comply no later than 5pm Saturday. Failure to provide all of above will end in disqualification of the fish.

It is recommended you tape your ribbon to the tag pole to ensure you don't lose it.

**It is essential you send your tagged fish photo through as soon as possible so it can be recorded by the weighmaster as in the event of a tie the 1<sup>st</sup> recorded fish will take the win.**

**SEND PHOTOS OF YOUR TAGGED MARLIN TO Weighmaster DAVE 0274 588 043.**

### **Weigh Station**

If you have a fish to weigh or tagged Marlin to be recorded, please call Dave 0274 588 043 or Aarron 027 298 2972 with what time you will be coming in. Please bring all angling equipment with you as well. Rod & reel, lure and other terminal tackle and tag pole used to catch fish. Catch sheet, Tag Card, photo/video evidence. **(Angler must have their ticket on them.)**

**Please check all of your equipment meets the rules (especially leader lengths etc). This will be checked so don't let it come back to bite you in the butt.**

### **Overall Team Prize Category**

Team with the most points – (\$10,000)

Eligible species Marlin, Broadbill, Shortbill Spearfish

**In the event no billfish are caught the 10k will Jackpot to next years competition.**

### **Overall Individual prizes (one prize per category per angler)**

Most Points Tagged Marlin – 1<sup>st</sup> 2<sup>nd</sup> and 3<sup>rd</sup> (count back done on first fish recorded)

Heaviest Marlin (Blue,Black,Stripped Marlin)

Heaviest Broadbill

Heaviest Short Bill Spearfish

Heaviest Tuna (YFT/BFT/Big Eye) – 1<sup>st</sup> 2<sup>nd</sup> 3<sup>rd</sup>

Heaviest Mahimahi – 1<sup>st</sup> 2<sup>nd</sup>

Longest Kingfish – 1<sup>st</sup> 2<sup>nd</sup>

### **Daily Prizes – Day 1 Sponsored by Monster Fishing**

First tagged Marlin recorded

Heaviest Broadbill

Heaviest Shortbill Spearfish

Heaviest Tuna (YFT/BFT/Big Eye)

Heaviest Mahimahi

Longest Kingfish

### **Daily Prizes – Day 2 Sponsored by Warren Hay Marine**

First tagged Marlin recorded

Heaviest Broadbill

Heaviest Shortbill Spearfish

Heaviest Tuna (YFT/BFT/Big Eye)

Heaviest Mahimahi

Longest Kingfish

Where no qualifying fish are presented for a category, prizes will be reallocated at the discretion of the competition organisers.

### **Kingfish measured and release.**

When measuring a Kingfish the nose must be touching the start of the measure mat (with the mouth closed). The photo must be from above the fish not on an angle. The anglers card must be in the photo to comply with the daily colour ribbon. (Check your photo is clear and readable in text when sending it through).

## Minimum sizes and bag limits

Catergory	Minimum Weight	Catch limit	Points
Tagged Marlin	N/A	None	200
Weighed Marlin	90kg to weigh	None	1 point per kg
Broadbill	90kg to weigh	None	150 tagged or 1 point per kg
Shortbill Spearfish	15kg	None	1 point per kg or 80 Points Tagged
Tuna (YFT/BFT/Big Eye)	15kg	None	N/A
Mahimahi	5kg	None	N/A
Kingfish	90cm	N/A	N/A

**This competition we encourage you to tag and release your Billfish catches so the point systems it set accordingly. 200 points will be awarded for each tagged Marlin so unless your fish is 200kg you are better to tag and release.**

**Points will be accumulated to the overall prize. Other fish will be weighed and count towards daily and individual prizes. In the event of a tie, the first fish presented will win by count back. All catches that are sent to the weigh master will be confirmed when received. If you don't get a confirmation please check it has.**

### RADIO ROUND UP

A round up will be broadcast on channel 18 at 2pm Thursday and Friday, Saturday will be 1pm. When answering please give Sponsors grid area and a brief report of your fishing. If you are in contact with boats out of range please provide a brief for them when they are called up.

### Tackle

All Tackle must comply in accordance with the IGFA Rules but line weight shall not exceed 60kg. In all matters not specifically covered, IGFA Equipment and Regulations shall apply.

Fish must be played by the 1<sup>st</sup> person to touch the rod, Junior Anglers 10 and under can have assistance getting the rod in to the gimble or game chair only.

A list of leader length compliance is in this booklet please familiarize your self with it to ensure you do not get disqualified.

### BAD WEATHER

In the event of bad weather, the competition committee reserves the right to postpone, change boundaries and or cancel the competition. A gale storm warning in force will automatically cancel fishing for the duration of said warning.

**BE SAFE ON THE WATER AND ON THE ROAD.** THIS IS A SOCIAL EVENT TO ENJOY. NO LIABILITY IS ACCEPTED BY THE ORGANISERS OR EVENT SPONSORS FOR DAMAGE TO ANY BOAT, VEHICLE, PROPERTY AND OR PERSONAL INJURY OF ANY NATURE. IT IS THE SKIPPERS AND ANGLERS' RESPONSIBILITY TO TAKE ALL STEPS TO ENSURE NO HARM COMES TO ANY PERSON.

### Radio Channel

Marsden Cove base channel used for this comp will be 18. Please note Bridge control use this channel also if they are talking, please don't try call in. Other Channel that can be used is 7. For tournament and safety reasons we ask those boats fishing out of Marsden Base VHF range keep in touch with other boats to relay messages through to game base. **Offensive language and abuse on the radio will not be tolerated, its actually not funny making stupid sounds and holding up the radio channel. Any person or persons found doing this behaviour or to be intoxicated beyond the capability to operate a boat or vehicle will be disqualified.** Skippers, please control your crew.

**No alcohol is to be brought into licensed premises of Marsden Cove Fishing Club and surroundings.**

# Illustrated Guide to Equipment Regulations

## Double Lines and Leaders



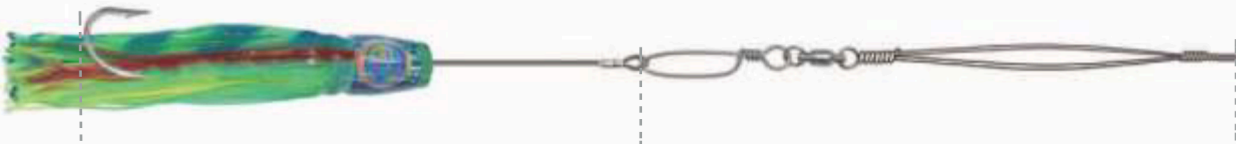
Double lines are measured from the start of the knot, braid, roll or splice making the double line to the farthermost end of the knot, splice, snap, swivel or other device used for securing the trace, leader lure or hook to the double line. A double line must consist of the actual line used to catch the fish. For saltwater species, the double line shall be limited to 4.57 meters (15 feet) for all line classes up to and including 10 kg. (20 lb.); and shall be limited to 9.14 meters (30 feet) for line classes over 10 kg. (20 lb.). For freshwater species, the double line on all classes of tackle shall not exceed 1.82 meters (6 feet).



The leader shall be limited to 4.57 meters (15 feet) for saltwater species in line classes up to and including 10 kg. (20 lb.), and 9.14 meters (30 feet) for all line classes over 10 kg. (20 lb.). For freshwater species, the leader on all classes of tackle shall be limited to 1.82 meters (6 feet).



The length of the leader is the overall length including any lure, hook arrangements or other device.



The combined length of the double line and leader shall not exceed 6.1 meters (20 feet) in line classes up to and including 10 kg. (20 lb.) and 12.19 meters (40 feet) in line classes over 10 kg. (20 lb.) for saltwater species. The combined length of the double line and leader shall not exceed 3.04 meters (10 feet) for freshwater species.

# Illustrated Guide to Equipment Regulations

## Natural Baits and Artificial



**LEGAL** if eyes of hooks no more than 45.72 centimeters (18 inches) apart in baits and no more than 30.45 centimeters (12 inches) apart in lures. **ILLEGAL** if eyes further apart than these distances.



**LEGAL** as eyes of hooks are no less than a hook's length apart and no more than 30.45 centimeters (12 inches) apart, and the trailing hook does not extend more than a hook's length beyond the skirt.



**NOT LEGAL** as the second or trailing hook extends more than the hook's length beyond skirt. See also two hook rigs.



**LEGAL** as hook is contained within the skirt.



**NOT LEGAL** in bait or lures as eyes of hooks are less than a hook's length (the length of the largest hook) apart.



**NOT LEGAL** as the single hook extends more than its length beyond the skirt.



**LEGAL** as eyes of hooks are no less than a hook's length apart and no more than 45.72 centimeters (18 inches) in baits and 30.45 centimeters (12 inches) in lures.



**NOT LEGAL** as back hook is not firmly imbedded in or securely attached to bait and is a dangling or swinging hook.



**LEGAL** in b baits and lures. The point of one hook is passed through the eye of the other hook.

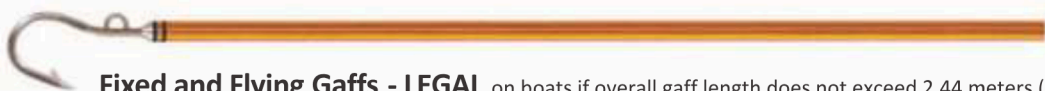


**LEGAL** as both hooks are firmly imbedded or securely attached to bait. Would not be legal if eyes of hooks were more than 45.72 centimeters (18 inches) apart.

## Gaffs and Snares



**Flying Gaffs - LEGAL** on boats if effective rope length does not exceed 9.15 meters (30 feet).



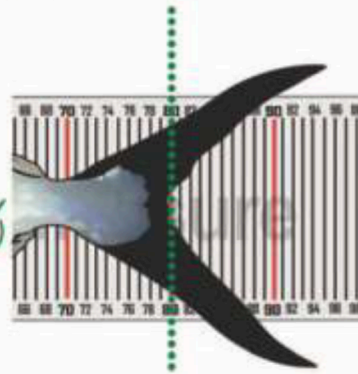
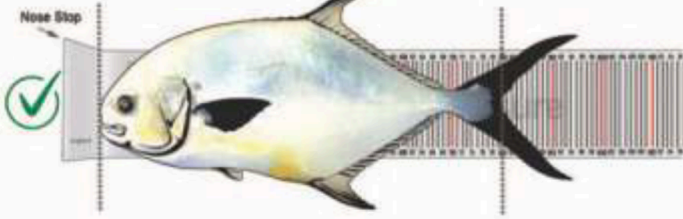
**Fixed and Flying Gaffs - LEGAL** on boats if overall gaff length does not exceed 2.44 meters (8 feet).



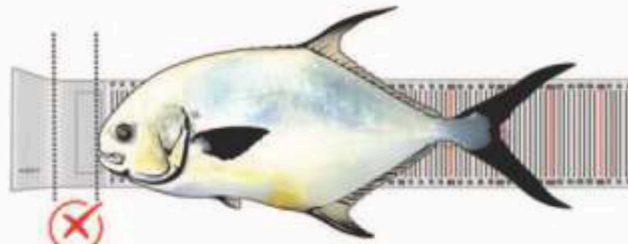
**Snares - LEGAL** Overall length of tail snares is defined as the distance from the beginning of the handle to the apex of the snare when loaded. Must not exceed 2.44 meters (8 feet) in overall length.

With the fish lying on top of the measuring device, measurements must be taken from the most forward part of the fish's snout to the rear center edge of the tail.

The fish's snout **must be touching** the nose stop and free of hands, flies or lifting devices.



All measurements must be made in centimeters. Fish measuring between centimeter increments shall be recorded at the lower of the two increments. For example, a fish that measures between 79 and 80 centimeters will have a recorded length of 79 centimeters.



The fish's snout is **not** touching the nose stop.



The fish must be measured using the official IGFA measuring device on a flat surface. There must be no wrinkles or overlaps in the device when measuring the permit.

## B. Minimum length requirements for vacant records

Fish entered for vacant record categories must measure within the top half of that species maximum recorded length.

## C. Minimum length requirements needed to defeat or tie existing records

1. To defeat an existing record, the fish must measure at least two (2) centimeters longer than the existing record.

2. A catch that matches the length of an existing record or exceeds the length by less than two centimeters will be considered a tie. In the case of a tie claim involving more than two catches, length must be compared with the original record (first fish to be caught). Nothing measuring less than the original record will be considered. In the event of an angler tying an existing record they currently hold; the catch must measure at least one centimeter greater than their current record to qualify for a tie.

## D. Photographic requirements

Photographs included with applications must contain the following:

1. The full length of the fish on the measuring device clearly showing the position of the mouth and tail. The fish may be held in position, but must be done in a manner that does not obscure the view of the fish on the tape.

2. A close up showing the position of the fish's nose and tail on the measuring device.

3. The angler with the fish.

4. The rod and reel used to make the catch.

## General Best Handling Practices

To remove your fish from the water to document it for record purposes, anglers should use either hands or a knotless, rubberized landing net to minimize slime and scale loss. Lip gripping devices may be used to help subdue fish. However, large fish should not be hoisted vertically out of the water, as this can cause damage to jaw muscle and bone as well as to internal organs. The best method for removing fish from the water by hand is to grip the fish or the lower jaw and support the fish's underside. Again, the point is always to hold fish horizontally and not vertically.

## Documentation

IGFA World Records require pictures and measurement and/or weighing of the catch. All of this takes time, so you should have the necessary equipment ready before landing the fish. If the documentation process takes longer than a minute, periodically place the fish back in the water or place in a live well to allow it to breathe.

## Releasing

Considerable care should be exercised when releasing fish. Fish should be placed in the water and held by the base of the tail. If the fish does not swim away from your grasp on its own, gently move it forward in the water to get water flowing over the gills. For best results, move the fish in the forward direction only instead of back and forth. Moving the fish in a slow circle or gently towing it behind the boat will help water flow over the gills in the correct direction.

## IGFA & NZSFC FISHING RULES & ANGLING REGULATIONS

The following angling rules have been formulated by the International Game Fish Association to promote ethical and sporting angling practices, to establish uniform regulations for the compilation of world game fish records, and to provide basic angling guidelines for use in fishing tournaments and any other group angling activities.

The word "angling" is defined as catching or attempting to catch fish with a rod, reel, line, and hook, as outlined in the international angling rules. There are some aspects of angling that cannot be controlled through rule making, however. Angling regulations cannot ensure an outstanding performance from each fish, and world records cannot indicate the amount of difficulty in catching the fish. Captures in which the fish has not fought or has not had a chance to fight do not reflect credit on the fisherman, and only the angler can properly evaluate the degree of achievement in establishing the record.

Only fish caught in accordance with IGFA international angling rules, and within the intent of these rules, will be considered for world records.

As these IGFA fishing regulations are for world record claims, these rules have been extended by the NZSFC for better understanding to enable them to be more suited for club trophies and tournaments. Any club who is considering running a fishing tournament with high value prizes should extend these fishing rules further to cover any circumstances pertaining to their club and sponsors requirements.

These game fishing regulations must be used for NZSFC National Record Claims.

These game fishing regulations must be used in the Annual NZSFC National Fishing Tournament.

Any Club or organization using these Game Fishing Regulations do so at their own risk. The NZSFC does not accept any responsibility in the use of these game fishing regulations in any other Tournaments.

Following are the rules for freshwater and saltwater fishing and a separate set of rules for fly-fishing.

### RULES FOR FISHING IN FRESH AND SALT WATER

(Also see *Rules for Fly-fishing*)

#### Equipment Regulations

##### A. LINE

1. Monofilament, multifilament, and lead core multifilament lines may be used. For line classes, see *World Record Requirements*.
2. Wire lines are prohibited.

##### B. LINE BACKING

1. Backing not attached to the fishing line is permissible with no restrictions as to size or material.
2. If the fishing line is attached to the backing, the catch shall be classified under the heavier of the two lines. The backing may not exceed the 130-lb (60-kg) line class and must be of a type of line approved for use in these angling rules.

##### C. DOUBLE LINE

The use of a double line is not required. If one is used, it must meet the following specifications:

1. A double line must consist of the actual line used to catch the fish.
2. Double lines are measured from the start of the knot, braid, roll or splice making the double to the farthest end of the knot, splice, snap, swivel or other device used for securing the trace, leader, lure or hook to the double line.

**Saltwater species:** In all line classes up to and including 20 lb (10 kg), the double line shall be limited to 15 feet (4.57 meters). The combined length of the double line and leader shall not exceed 20 feet (6.1 meters).

The double line on all classes of tackle over 20 lb (10 kg) shall be limited to 30 feet (9.14 meters). The combined length of the double line and leader shall not exceed 40 feet (12.19 meters).

**Freshwater species:** The double line on all classes of tackle shall not exceed 6 feet (1.82 meters). The combined length of the double line and the leader shall not exceed 10 feet (3.04 meters).

#### **D. LEADER**

The use of a leader is not required. If one is used, it must meet the following specifications:

The length of the leader is the overall length including any lure, hook arrangement or other device, and is measured to the bend of the last hook. The leader must be connected to the line with a snap, knot, splice, swivel or other device. Holding devices are prohibited. There are no regulations regarding the material or strength of the leader.

**Saltwater species:** In all line classes up to and including 20 lb (10 kg), the leader shall be limited to 15 feet (4.57 meters). The combined length of the double line and leader shall not exceed 20 feet (6.1 meters).

The leader on all classes of tackle over 20 lb (10 kg) shall be limited to 30 feet (9.14 meters). The combined length of the double line and leader shall be limited to 40 feet (12.19 meters).

**Freshwater species:** The leader on all classes of tackle shall be limited to 6 feet (1.82 meters). The combined length of the double line and leader shall not exceed 10 feet (3.04 meters).

#### **E. ROD**

1. Rods must comply with sporting ethics and customs. Considerable latitude is allowed in the choice of a rod, but rods giving the angler an unfair advantage will be disqualified. This rule is intended to eliminate the use of unconventional rods.
2. The rod tip must be a minimum of 40 inches (101.6 cm) in length. The rod butt cannot exceed 27 inches (68.58 cm) in length. These measurements must be made from a point directly beneath the center of the reel. A curved butt is measured in a straight line. When the rod butt is placed in a gimbal, the measurement from the centre of the reel seat to the pivot point of the gimbal can be no more than 27 inches. (The above measurements do not apply to surf casting rods).

#### **F. REEL**

1. Reels must comply with sporting ethics and customs.
2. Power driven reels of any kind are prohibited. This includes motor, hydraulic, or electrically driven reels, and any device, which gives the angler an unfair advantage.
3. Ratchet handle reels are prohibited.
4. Reels designed to be cranked with both hands at the same time are prohibited.

#### **G. HOOKS FOR BAIT FISHING**

1. For live or dead bait fishing no more than two single hooks may be used. Both must be firmly imbedded in or securely attached to the bait. The eyes of the hooks must be no less than a hook's length (the length of the largest hook used) apart and no more than 18 inches (45.72 cm) apart. The only exception is that the point of one hook may be passed through the eye of the other hook. A hook may not precede bait, lure or bait/lure combo by more than one hook's length.
2. The use of a dangling or swinging hook is prohibited. Double or treble hooks are prohibited.
3. A two-hook rig for bottom fishing is acceptable if it consists of two single hooks on separate leaders or drops. Both hooks must be imbedded in the respective baits and separated sufficiently so that a fish caught on one hook cannot be foul-hooked by the other.
4. A photograph or sketch of the hook arrangement must accompany all record applications made for fish caught on two-hook tackle.

#### **H. HOOKS AND LURES**

1. When using an artificial lure with a skirt or trailing material, no more than two single hooks may be attached to the line, leader, or trace. The hooks need not be attached separately. The eyes of the hooks must be no less than an overall hook's length (the overall length of the largest hook used) apart and no more than 12 inches (30.48 cm) apart. The only exception is that the point of one hook may be passed through the eye of the other hook. The trailing hook may not extend more than a hook's length beyond the skirt of the lure. A hook may not precede bait, lure or bait/lure combo by more than one hook's length. A photograph or sketch showing the hook arrangement must accompany a record application.
2. Gang hooks are permitted when attached to plugs and other artificial lures that are specifically designed for this use. Gang hooks must be free swinging and shall be limited to a maximum of three hooks (single, double, or treble, or a combination of any three). Baits may not be used with gang hooks. A photograph or sketch of the plug or lure must be submitted with record applications.

3. Assist hooks or other such single hooks that are attached to a lure with a lead constructed of monofilament, multifilament, wire or other such material must conform to the following: When using assist hooks on any artificial lure, other than a skirted lure, the lead cannot be more than 1 ½ hook's length and the bend of the hook may not be more than 4 inches (101 mm) whichever is less, from the closest point of attachment on the lure. Double and treble hooks may not be used as assist hooks.

#### 1. OTHER EQUIPMENT

1. *Fighting chairs* may not have any mechanically propelled devices that aid the angler in fighting a fish.
2. *Gimbals* must be free swinging, which includes gimbals that swing in a vertical plane only. Any gimbal that allows the angler to reduce strain or to rest while fighting the fish is prohibited.
3. *Gaffs and nets* used to boat or land a fish must not exceed 8 feet (2.44 meters) in overall length. In using a flying or detachable gaff the rope may not exceed 30 feet (9.14 meters). The gaff rope must be measured from the point where it is secured to the detachable head to the other end. Only the effective length will be considered. If a fixed head gaff is used, the same limitations shall apply and the gaff rope shall be measured from the same location on the gaff hook. Only a single hook is permitted on any gaff. **Choke ropes must not exceed 30 ft (9.14 meters) including the wire or chain on one end.** Harpoon or lance attachments are prohibited. Tail ropes are limited to 30 feet (9.14 meters). **(Once the catch is along side and under control and the crew are unable to lift the fish on board, an anchor rope or block and tackle may be attached to the tail or gaff rope to bring the catch on board as long as the crew can verify it was not used in the fight of the fish).** (When fishing from a bridge, pier or other high platform or structure, this length limitation does not apply).
4. *Entangling devices*, either with or without a hook, are prohibited and may not be used for any purpose including baiting, hooking, fighting or landing the fish.
5. *Outriggers, downriggers, spreader bars and kites* are permitted to be used provided that the actual fishing line is attached to the snap or other release device, either directly or with some other material. The leader or double line may not be connected to the release mechanism either directly or with the use of a connecting device. Spreader bars are also acceptable when used strictly as a teaser.
6. *Daisy chains, birds, floats and similar devices* may only be used if they do not unfairly hamper or inhibit the normal swimming or fighting ability of the fish, thereby giving the angler or crew an unfair advantage in fighting, landing or boating the fish.
7. A safety line may be attached to the rod, reel or harness provided that it does not in any way assist the angler in fighting the fish.
8. **Tag poles must be the same length as the Gaff i.e 8 feet (2.44 meters)**

#### ANGLING REGULATIONS

1. From the time that a fish strikes or takes a bait or lure, the angler must hook, fight, and land or boat the fish without the aid of any other person, except as provided in these regulations.
2. If a rod holder is used once the fish is hooked, the angler must remove the rod from the holder as quickly as possible.
3. In the event of a multiple strike on separate lines being fished by a single angler, only the first fish fought by the angler will be considered for a world record.
4. If a double line is used, the intent of the regulations is that the fish will be fought on the single line most of the time that it takes to land the fish.
5. Use of a rod belt or waist gimbal is permitted.
6. When angling from a boat, once the leader is brought within the grasp of the mate, or the end of the leader is wound to the rod tip, more than one person is permitted to hold the leader. Anyone assisting a shore-bound or wading angler must be within a rods length of the angler before touching the leader or netting or gaffing the fish.
7. One or more gaffers may be used in addition to persons holding the leader. The gaff handle must be in hand when the fish is gaffed
8. The angling and equipment regulations shall apply until the fish is weighed.
9. **In the event of an angler wishing to re-use a successful lure on the same day, the leader must be cut on a 45 degree angle at the swivel top or loop end. Both pieces together with the re-rigged lure must be presented to the weighmaster or judge that day.**
10. **Any catch will not be deemed to be complete until after the catch is weighed. In the event of a fish being tagged, the catch will be deemed complete when the tag is inserted in the fish.**
11. **When tagging a fish, the tag pole must be held at all times.**

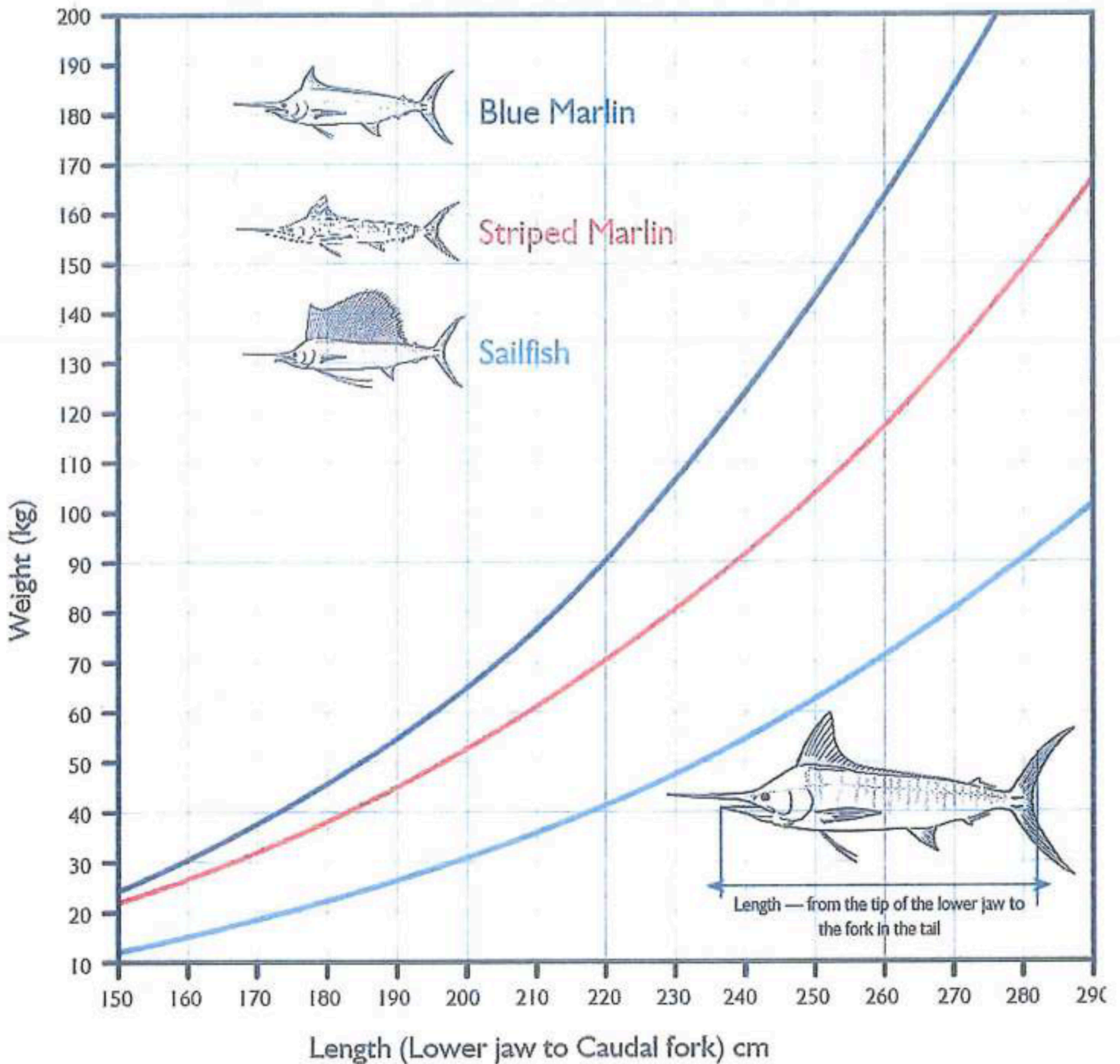
The following acts will disqualify a catch:

1. Failure to comply with equipment or angling regulations.
2. The act of persons other than the angler in touching any part of the rod, reel, or line (including the double line) either bodily or with any device, from the time a fish strikes or takes the bait or lure, until the fish is either landed or released, or in giving any aid other than that allowed in the rules and regulations. If an obstacle to the passage of the line through the rod guides has to be removed from the line, then the obstacle (whether chum, floatline, rubber band, or other material) shall be held and cut free. Under no circumstances should the line be held or touched by anyone other than the angler during this process.
3. **Returning the rod to the rod holder**, resting the rod in a rod holder, on the gunwale of the boat, or any other object while playing the fish. **The rod being passed to the angler after the fish has taken the bait or lure**
4. Handlining or using a handline or rope attached in any manner to the angler's line or leader for the purpose of holding or lifting the fish.
5. Shooting, harpooning, or lancing any fish (including sharks and halibuts) at any stage of the catch.
6. Chumming with or using as bait the flesh, blood, skin or any part of mammals other than hair or pork rind used in lures designed for trolling or casting.
7. Using a boat or device to beach or drive a fish into shallow water in order to deprive the fish of its normal ability to swim.
8. Changing the rod or reel while the fish is being played.
9. Splicing, removing, or adding to the line while the fish is being played.
10. Intentionally foul-hooking a fish.
11. Catching a fish in a manner that the double line never leaves the rod tip.
12. Using a size or kind of bait that is illegal to possess.
13. Attaching the angler's line or leader to part of a boat or other object for the purpose of holding or lifting the fish.
14. If a fish escapes before gaffing, or netting, and is recaptured by any method other than as outlined in the angling rules.
15. **When live baiting and the deckhand or any other person other than the angler is holding the rod when the fish takes the bait.**
16. **If a fish escapes before gaffing, netting, tagging, or deliberately releasing it, it will be considered a free swimming fish and will not be regarded as a catch.**
17. **That any marlin taken out of the water to be Tagged and released will be disqualified.**
18. **If the tag pole is used in a manner of a Harpoon, when tagging a fish or when it leaves the hand.**

**The following situations will disqualify a catch:**

1. When a rod breaks (while the fish is being played) in a manner that reduces the length of the tip below minimum dimensions or severely impairs its angling characteristics.
2. Mutilation to the fish, prior to landing or boating the catch, caused by sharks, other fish, mammals, or propellers that remove or penetrate the flesh. (Injuries caused by leader or line, scratches, old healed scars or regeneration deformities are not considered to be disqualifying injuries). Any mutilation on the fish must be shown in a photograph and fully explained in a separate report accompanying the record application.
3. When a fish is hooked or entangled on more than one line.

## HOW TO MEASURE YOUR MARLIN



Proud supporters of the Metalcraft / Akarana Timbers Marlin Classic

# MARSDEN PRINT

QUALITY COMMERCIAL PRINTERS

**DIGITAL PRINTING | OFFSET PRINTERS | PROMO GEAR**

**Supplying Northland and beyond for 20 years!**

Unit 1/16 Marsden Bay Drive  
0800 432 898 | 09 432 8998 | [www.marsdenprint.co.nz](http://www.marsdenprint.co.nz)

ZS ZN

DEPTHS IN METRES

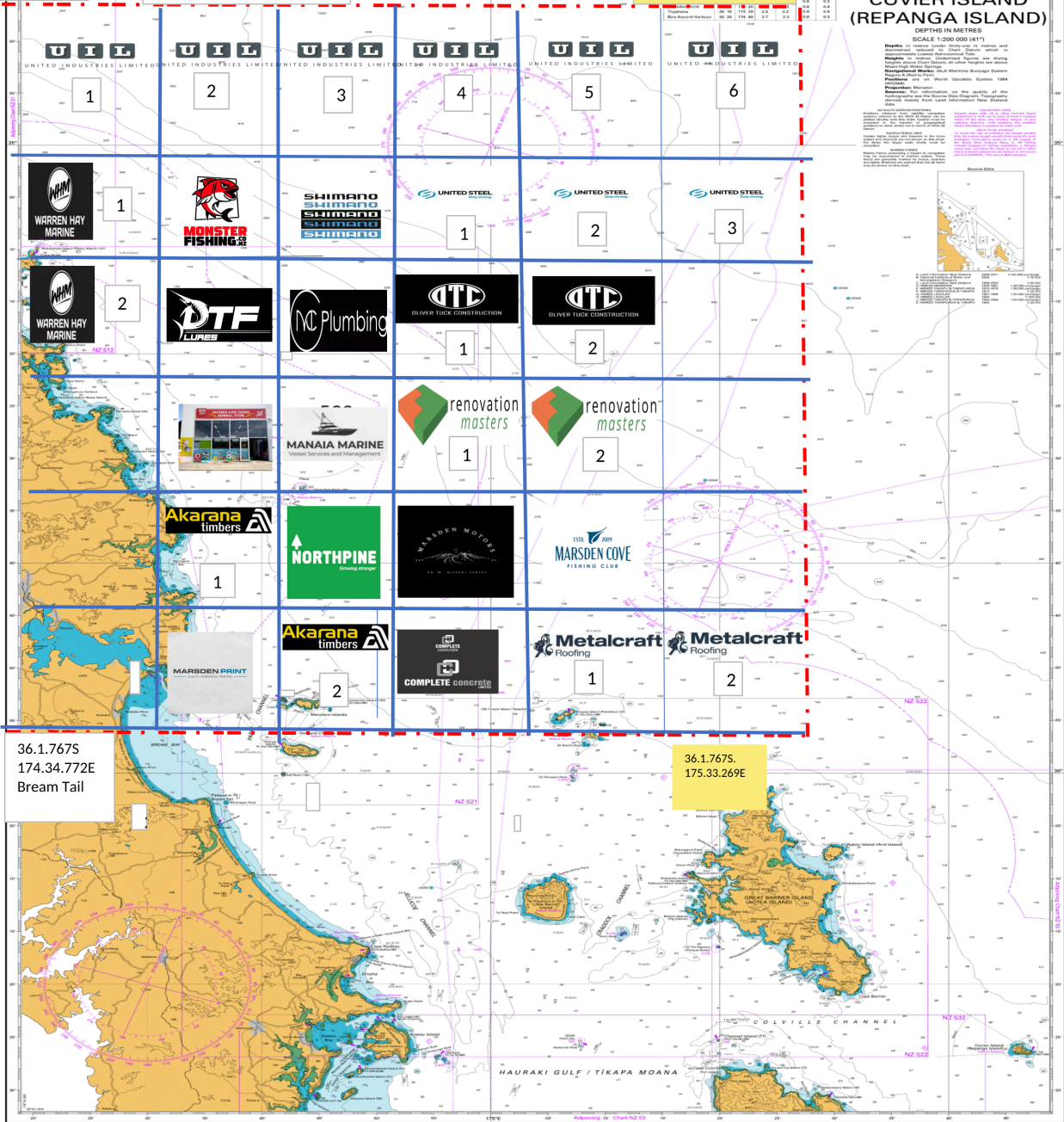
WGS 84 DATUM

Land Information New Zealand  
NEW ZEALAND  
NORTH ISLAND - EAST COAST  
CAPE BRETT  
TO  
CUVIER ISLAND  
(REPANGA ISLAND)  
DEPTHS IN METRES  
SCALE 1:250 000 (A17)

ROCKY POINT-----  
35.6.930S-  
174.5.469E

**Akarana timbers**  
Major sponsor 2026

35.6.930S 175.33.269 E  
INCLUDES NINE PIN  
TRENCH



36.1.767S  
174.34.772E  
Bream Tail

36.1.767S.  
175.33.269E



HUGE THANK YOU TO ALL OUR SPONSORS – WITHOUT THEM THIS COMP WOULD NOT BE HAPPENING



UNITED INDUSTRIES LIMITED A group of companies including – Akarana Timbers, Metalcraft Roofing, United Steel, Millier Reinforcing, Styrobeck, Pipemakers, Zeta Joinery, Pipes Nz, IMBMS.



Akarana Timbers, a leading local **building material supplier**, providing quality **structural and non structural timber** alongside a full range of **building materials** and engineered **timber frames and trusses**.

Our network of branches offer an extensive range of timber supplies, landscaping products, building supplies, hardware, and tools—the ideal one-stop trade shop. Whatever your job may require, get in touch with us



**Warren Hay Marine** is your trusted **marine** dealer in **Whangarei**, NZ—offering Mercury and Suzuki outboards, Extreme and McLay boats, expert servicing, and genuine parts. Visit us in-store or shop online for top **marine**... Outboard repairs. Outboard servicing. Instore lure rigging.



Nz Made lures with a proven record for catching pelagic fish – Last Marlin Classic 1 of the anglers who won a DTF Lure ran it for the 1<sup>st</sup> time in the BOI and caught a Marlin he has since caught many more and is his favourite lure. Check them out on facebook.



Award winning Local commercial and residential building company.

At Oliver Tuck Construction, we are committed to delivering a quality, trustworthy and dependable service. We understand that building any home is a significant decision, it can feel daunting and we are here to help support you at every step of the way. It is what we do and what we love! Come and meet us and we will take you through everything you need to know.



Complete Concrete has built a reputation priding their brand on top quality finishes assisting you with your project from start to finish ensuring you get the result you are happy with. For all your Concrete needs get in touch.



A brand everyone knows, providing top quality fishing gear. Check their website out for all your needs.



McC Plumbing is a family run business locally owned by Sean McCully (Certifying Plumber) in One Tree Point.

Established in 2017, McC Plumbing has been providing top quality plumbing services for many satisfied customers ranging from Mangawhai, Waipu, Ruakaka and as far north as Whangarei.

If you need a plumber get in touch with Sean very great to deal with.



Northpine is committed to delivering high quality structural timber products to its customers. We do this through a combination of outstanding product knowledge, technical sawmilling excellence, teamwork, efficiency, and an empowering culture of constant improvement that recognises every team member and encourages constant learning.



Monster Fishing NZ delivers premium fishing gear, lures, rods, reels and tackle from top global brands. Fast NZ shipping, sharp prices and real expert help. Check out there new local store in Marsden city or shop online.



**Manaia Marine** is a marine service provider located in **One Tree Point, Northland, New Zealand**. Establihed in 2023 by **Kyle Taylor**, who has over 10 years of experience in the marine industry, the company offers a range of services including vessel management, maintenance, and detailing. They serve various marinas in the area, providing tailored management and servicing packages to keep vessels in top condition. For more information, you can visit their website or contact them directly.



Marsden Motors – Locally owned and operated situated in Kitepai street Marsden.

For all your servicing and mechanical needs including boat trailers get in touch with chase and the team there service and experience is top notch highly recommend.



Marsden fishing club – The place to go to celebrate and Drown the good and bad days fishing.

Family friendly club with new clubrooms making a drink peaceful with a great view.



**Renovation Masters Whangarei** is a construction and renovation company located at **273 Port Road, Whangarei**. They have been providing services in the Northland region for over 10 years, specializing in various building renovation needs, including New Builds, additions, alterations, and renovations.